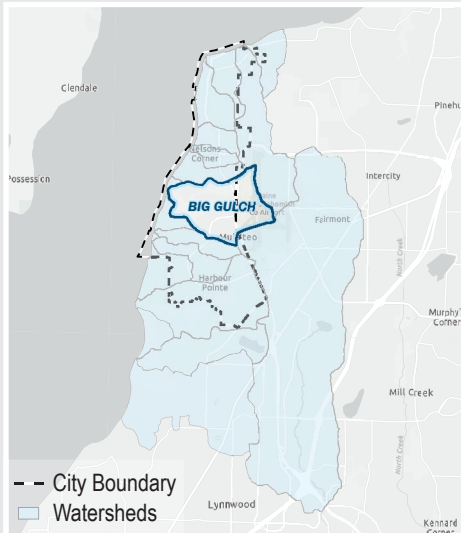


BIG GULCH

Receiving Water Puget Sound
 WRIA 8
 Acres 1086.54

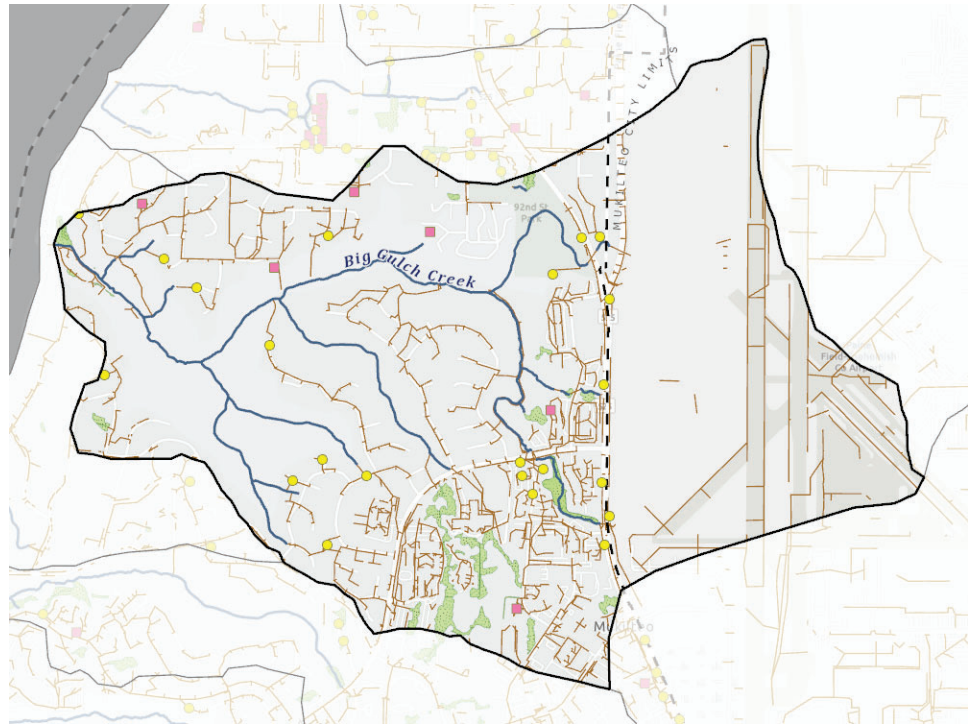


Location



Acres in City Jurisdiction **733.65**
 Percent in City Jurisdiction **68%**

Streams and Pipes

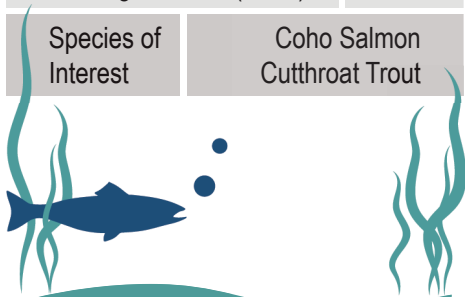


Stormwater Pipe/Ditch Length **31.07 miles**
 Stream Length **4.75 miles**
 Wetlands
 Stormwater Facility (Public)
 Stormwater Facility (Private)
 Stormwater Facility (P&P) Total Count **28**

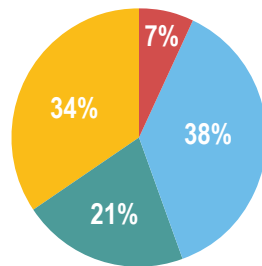
Habitat Information



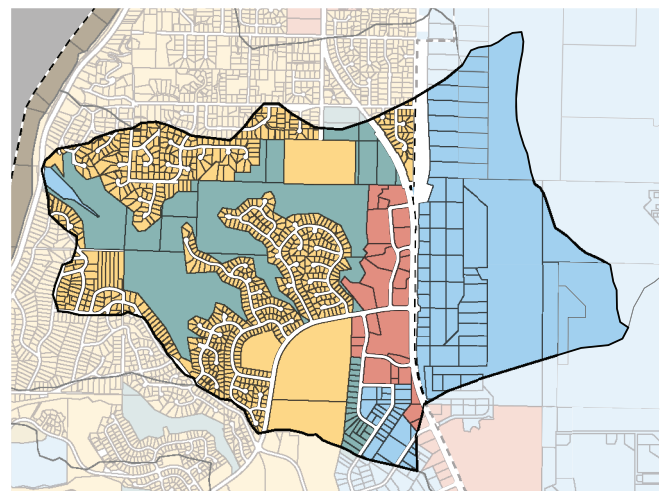
Habitat - Wetland (Acres)	8.12
Habitat - Length Fish Bearing Streams (Miles)	1.67
Species of Interest	Coho Salmon Cutthroat Trout



Zoning



Zone	Acres
Commercial	70.73
Industrial	368.45
Open Space	206.52
Residential	338.12



Unique Characteristics

Home to Big Gulch Park and Trails <https://mukilteowa.gov/wp-content/uploads/Big-Gulch-Trails.pdf>

Wastewater Treatment Plant located near the mouth.

Previously owned by the Port Gamble Lumber Company and the Chevron Oil Company.

For more information scan the QR code or visit <https://stormwater-comp-plan-2024-1-mukilteo-city.hub.arcgis.com/>

