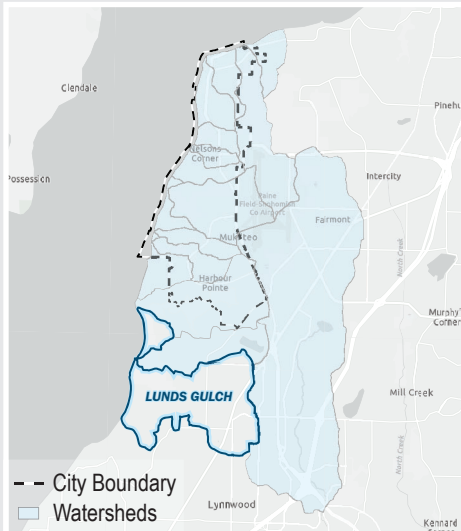


LUNDS GULCH

Receiving Water Puget Sound
 WRIA 8
 Acres 2348.01

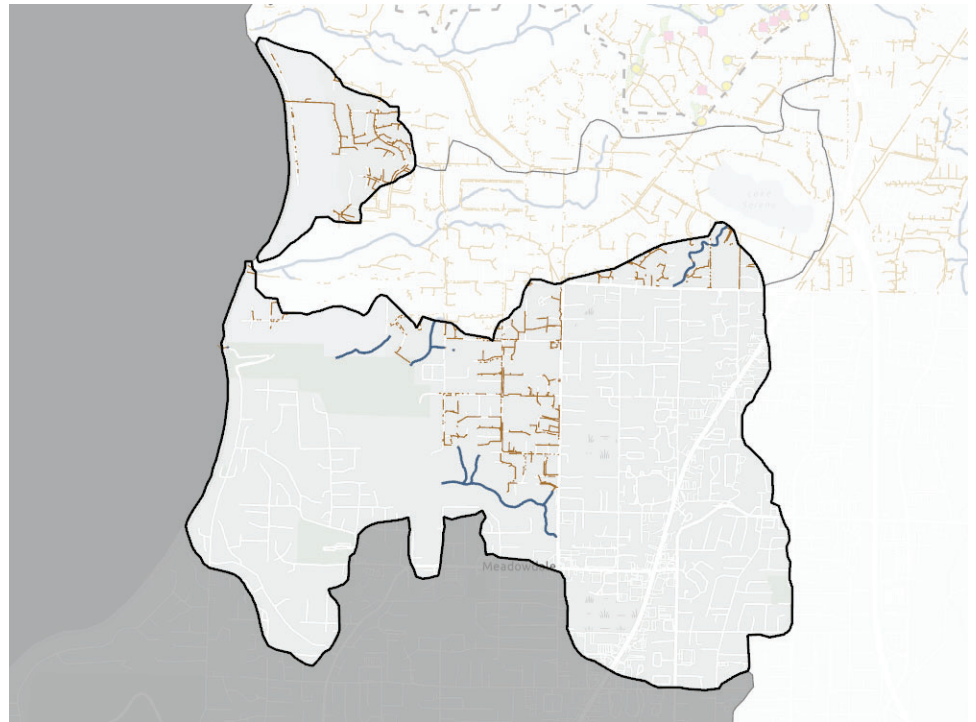


Location



Acres in City Jurisdiction **0.00**
 Percent in City Jurisdiction **0%**

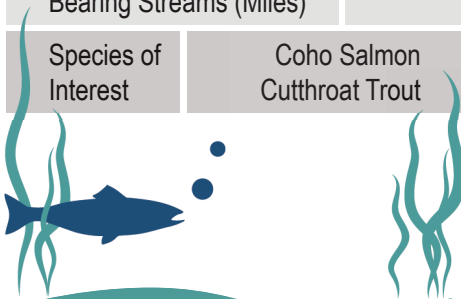
Streams and Pipes



Habitat Information



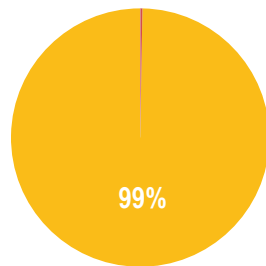
Habitat - Wetland (Acres)	59.01
Habitat - Length Fish Bearing Streams (Miles)	3.30
Species of Interest	Coho Salmon Cutthroat Trout



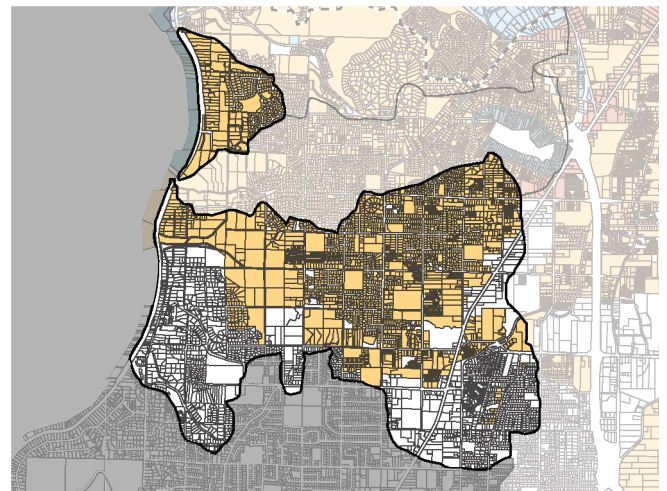
Stormwater Pipe/Ditch Length **11.59 miles**
 Stream Length **1.98 miles**
 Wetlands

Stormwater Facility (Public)
 Stormwater Facility (Private)
 Stormwater Facility (P&P) Total Count **0**

Zoning



Zone	Acres
Commercial	1.59
Industrial	1.06
Open Space	1.00
Residential	1174.60



Unique Characteristics

Named after one of the first settlers in the area, John Lund who homesteaded the area in 1878.

Flows through Meadowdale Beach County Park which has hiking trails and beach access.

Unincorporated Snohomish County. Included for completeness.

For more information scan the QR code or visit <https://stormwater-comp-plan-2024-1-mukilteo-city.hub.arcgis.com/>

