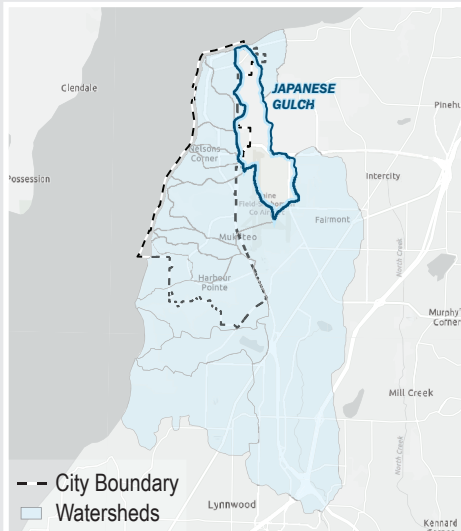


# JAPANESE GULCH

Receiving Water **Puget Sound**  
 WRIA **7**  
 Acres **1148.44**

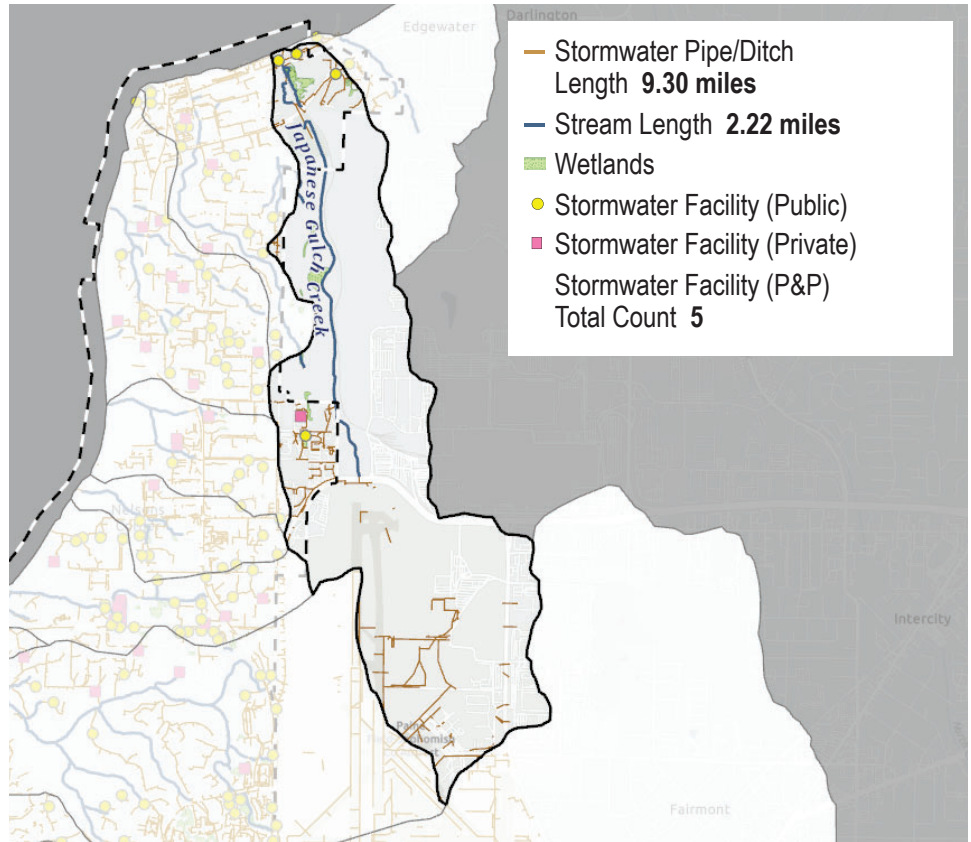


## Location



Acres in City Jurisdiction **185.15**  
 Percent in City Jurisdiction **16%**

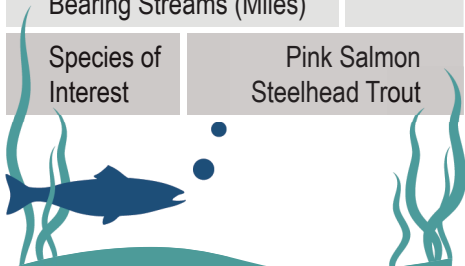
## Streams and Pipes



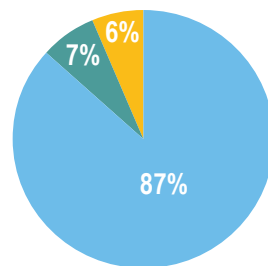
## Habitat Information



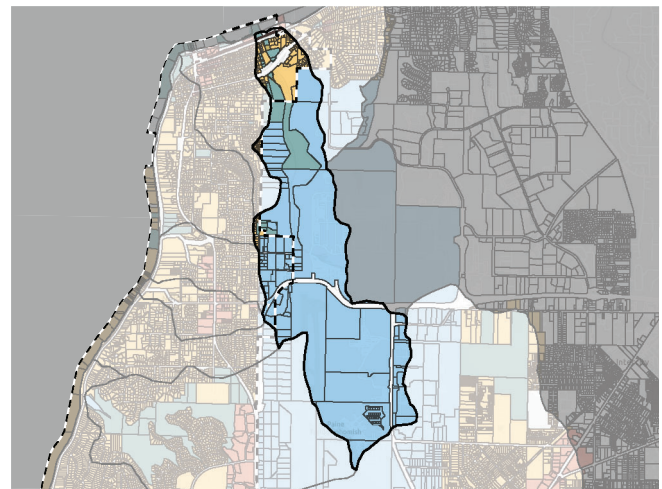
Habitat - Wetland (Acres)	24.78
Habitat - Length Fish Bearing Streams (Miles)	0.0
Species of Interest	Pink Salmon Steelhead Trout



## Zoning



Zone	Acres
Commercial	1.70
Industrial	938.34
Open Space	76.86
Residential	67.33



## Unique Characteristics

Named after the Japanese immigrants who worked at Mukilteo Lumber Company (1903-1930) and lived the company housing in the gulch.

The Boeing railroad spur is the steepest standard gauge railroad in America, at a 7% incline.

Over four miles of multimodal trails.

Fish ladder visible from trail

For more information scan the QR code or visit <https://stormwater-comp-plan-2024-1-mukilteo-city.hub.arcgis.com/>

